

1 2 3 4 5 6

A

B

C

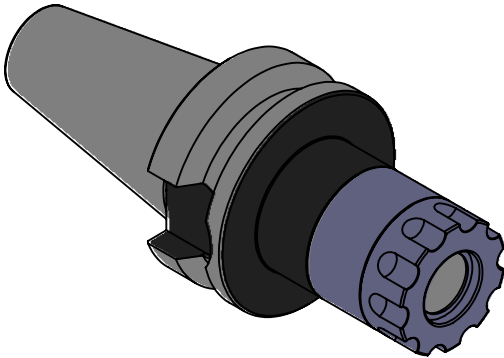
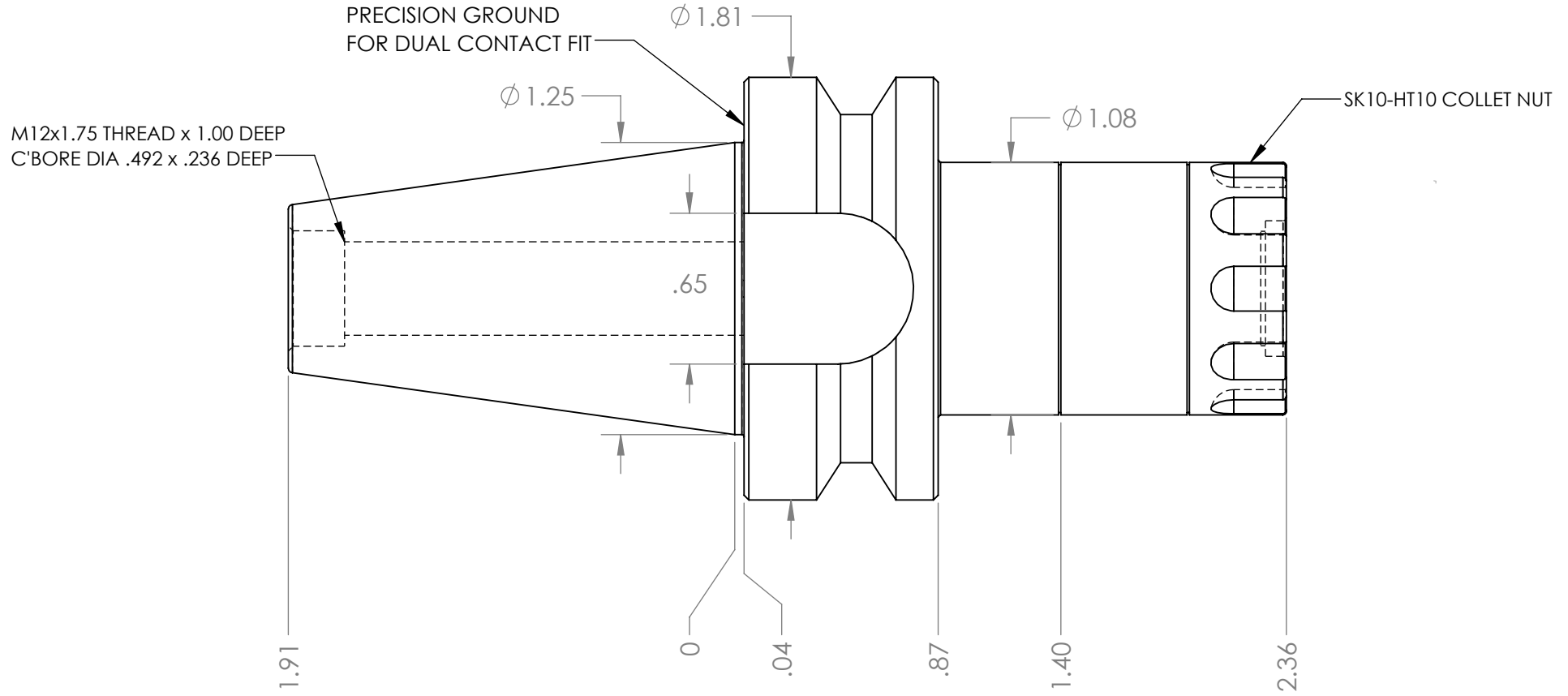
D

A

B

C

D



NOTES:  
WORKS ON ALL BT30 MACHINES WITH DUAL CONTACT SPINDLES  
COMPATIBLE WITH BIG-PLUS® SPINDLES  
TAKES ALL SK10 COLLETS FROM .078"-.393"  
USES WRENCH PART # HT10-TWA TORQUE WRENCH (NOT INCLUDED)  
FOR MORE PRODUCT DETAILS PLEASE GO TO MARITOO.COM  
AND SEARCH ITEM # LISTED ON THIS PRINT

**MARITOO**

WWW.MARITOO.COM

ITEM# **BT30 SK10-60D-HT**

Made in USA

1 2 3 4 5 6